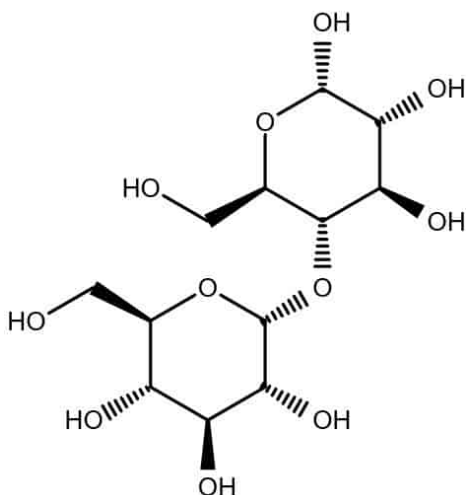


h1>Corn starch [9005-25-8]

Absolute



CAS number: **9005-25-8**

Summary formula: **(C<sub>6</sub>H<sub>10</sub>O<sub>5</sub>)<sub>n</sub>**

Molar mass: **(162.14) n**

Synonyms: **none**

Translation [ENG]: **Starch**

Application: **Starch is used as a dusting powder; pharmaceutical assistance.**

**Uses corn starch as a thickening agent in cosmetics and face powders. Corn starch absorbs water and soothes the skin. May cause allergic reactions such as eye inflammation, stuffy nose and long-term hay fever.**

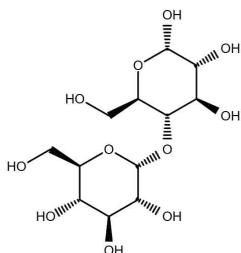
## VARIATIONS

**Image**

**Price**

**Pack size**

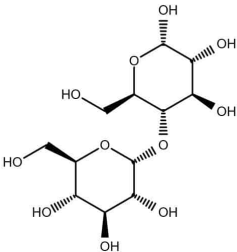
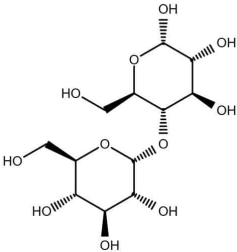
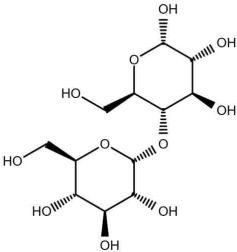
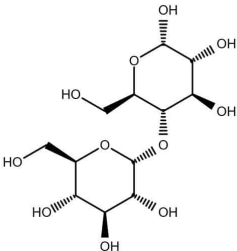
Absolute



£2,85 gross | £2,32 netto

500 g



Image	Price	Pack size
<div><small>Absolute</small> </div>	£5,70 gross   £4,63 netto	1 kg
<div><small>Absolute</small> </div>	£14,24 gross   £11,58 netto	2.5 kg
<div><small>Absolute</small> </div>	£56,96 gross   £46,31 netto	10 kg
<div><small>Absolute</small> </div>	£138,51 gross   £112,61 netto	25 kg

## PRODUCT DESCRIPTION

### Corn starch [9005-25-8]

Starch is used as a dusting powder; pharmaceutical assistance. Uses corn starch as a thickening

agent in cosmetics and face powders. Corn starch absorbs water and soothes the skin. May cause allergic reactions such as eye inflammation, stuffy nose and long-term hay fever. Natural material obtained from corn kernels.

Melting point: 256-258 ° C

Density: 1.5

Temp. Storage: Store at 2-8 ° C

Solubility: H<sub>2</sub>O: 20 mg / ml, colorless, clear to slightly cloudy

White color

PH 4-7 (100 g / l, H<sub>2</sub>O, 25 °C) (suspension)

EPA substance registration system Starch (9005-25-8)

### **Hazard pictograms**

Labeling of hazardous chemicals and mixtures that are part of the Globally Harmonized System of Classification and Labeling of Chemicals (GHS). The pictograms recommended by GHS have the shape of a square set on the top. They should contain a black symbol on a white background with a red border.

Priority rules to be observed in connection with the labeling of a substance:

- the skull and crossbones, the exclamation mark pictogram should not be added.
- corrosive effect, the exclamation mark pictogram should not be added if it concerns eye or skin irritation.
- health hazard determining respiratory sensitization, the exclamation mark pictogram should not be added if it concerns skin sensitization or irritation to eyes or skin.

Source: [GHS pictograms](#)