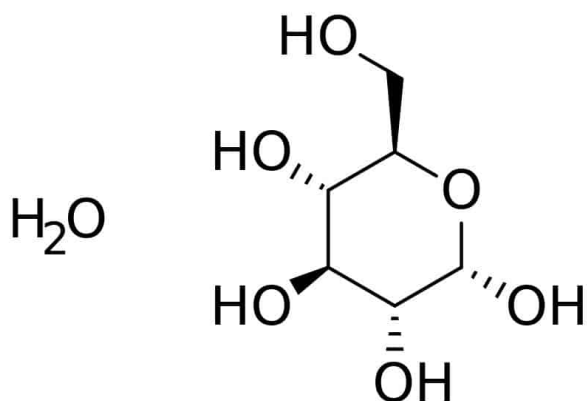


h1>Dextrose Monohydrate 99.5%

[14431-43-7]



CAS number: **14431-43-7**

Summary formula: **C₆H₁₂O₆ · H₂O**

Molar mass: **198.18 g / mol**

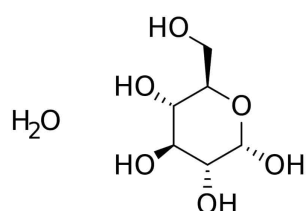
Synonyms: **Dextrose monohydrate, Dextrosum (Glucosum) monohydricum, D-Glucopyranose monohydrate, D-Glucose monohydrate**

Translation [ENG]: **D - (+) - Glucose monohydrate**

Application: **Dextrose monohydrate restores blood glucose levels, provides calories, can help minimize liver glycogen depletion and exert protein-sparing effects. Dextrose also plays a role in protein production and lipid metabolism.**

VARIATIONS

Image	Price	Pack size
	£113,96 gross £92,65 netto	10 kg

Image	Price	Pack size
	£569,81 gross £463,26 netto	50 kg

PRODUCT DESCRIPTION

Dextrose Monohydrate 99.5% [14431-43-7]

Dextrose monohydrate restores blood glucose levels, provides calories, can help minimize liver glycogen depletion, and exert protein-sparing effects. Dextrose also plays a role in protein production and lipid metabolism.

Physical description White crystalline powder

Solubility (10% in water). Clear, colorless solution

pH 3.0 - 6.0

Sulfur dioxide (SO₂) ≤ 10mg / kg

Water (KF) 7.0 - 9.5%

Purity (HPLC) ≥ 99.5%

As: ≤0.1 mg / kg

Ca: ≤10 mg / kg

Cd: ≤5 mg / kg

Every: ≤5 mg / kg

Cr: ≤5 mg / kg

Cu: ≤5 mg / kg

Fe: ≤5 mg / kg

K: ≤50 mg / kg

Mg: ≤5 mg / kg

Mn: ≤5 mg / kg

Na: ≤50 mg / kg

Ni: ≤5 mg / kg

Pb: ≤5 mg / kg

Zn: ≤5 mg / kg

Hazard pictograms

Labeling of hazardous chemicals and mixtures that are part of the Globally Harmonized System of Classification and Labeling of Chemicals (GHS). The pictograms recommended by GHS have the shape of a square set on the top. They should contain a black symbol on a white background with a red border.

Priority rules to be observed in connection with the labeling of a substance:

- the skull and crossbones, the exclamation mark pictogram should not be added.
- corrosive effect, the exclamation mark pictogram should not be added if it concerns eye or skin irritation.
- health hazard determining respiratory sensitization, the exclamation mark pictogram should not be added if it concerns skin sensitization or irritation to eyes or skin.

Source: [GHS pictograms](#)