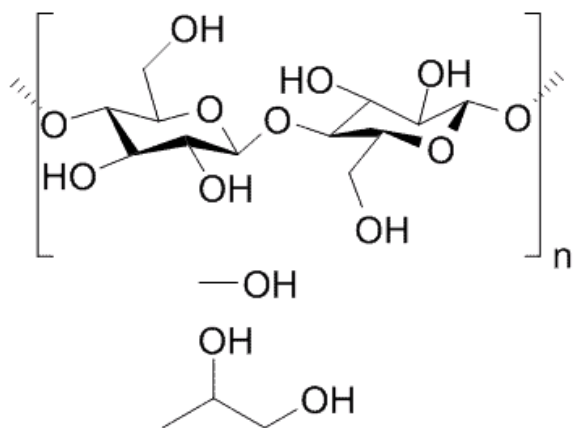


h1>Hydroxypropyl methylcellulose 3000cPs
+ [9004-65-3]



CAS number: **9004-65-3**

Summary formula: **C₁₈H₃₈O₁₄**

Molar mass: **478.49 g / mol**

Synonyms: **hypromellose**

Translation [ENG]: **hydroxypropyl methyl cellulose**

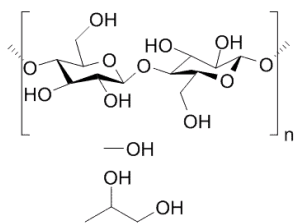
Application: **Hydroxypropyl methylcellulose has been used in extended release pharmaceutical products for many years. When used in matrix tablets, these polymers hydrate on contact with water to form a sticky gel barrier inside and around the tablet.**

VARIATIONS

Image

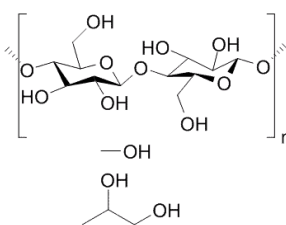
Price

Pack size



£949,98 gross | £772,34 netto

10 kg

Image	Price	Pack size
	£2.279,81 gross £1.853,50 netto	25 kg

PRODUCT DESCRIPTION

Hydroxypropyl methylcellulose 3000cPs + [9004-65-3]

Hydroxypropyl methylcellulose has been used in extended release pharmaceutical products for many years. When used in matrix tablets, these polymers hydrate on contact with water to form a sticky gel barrier inside and around the tablet. Properties that affect the rate of drug release include the rate of water diffusion into the dry polymer, the rate of hypromellose hydration and gel formation, the viscosity of hydrated hypromellose, and the rate of hypromellose gel erosion.

Conductivity (40%, water): $\leq 5 \mu\text{mho}$

Free acrylic acid: $\leq 0.001\%$

Iron (Fe): $\leq 0.0001\%$

Lead (Pb): $\leq 0.0001\%$

Melting point: 84-86 ° C

pH (10% in 100 mM NaCl, 25 ° C): 5.5-6.5

Protease: Not detected

RNase: Not detected

Hazard pictograms

Labeling of hazardous chemicals and mixtures that are part of the Globally Harmonized System of Classification and Labeling of Chemicals (GHS). The pictograms recommended by GHS have the shape of a square set on the top. They should contain a black symbol on a white background with a red border.

Priority rules to be observed in connection with the labeling of a substance:

- the skull and crossbones, the exclamation mark pictogram should not be added.
- corrosive effect, the exclamation mark pictogram should not be added if it concerns eye or skin irritation.
- health hazard determining respiratory sensitization, the exclamation mark pictogram should not be added if it concerns skin sensitization or irritation to eyes or skin.

Source: [GHS pictograms](#)