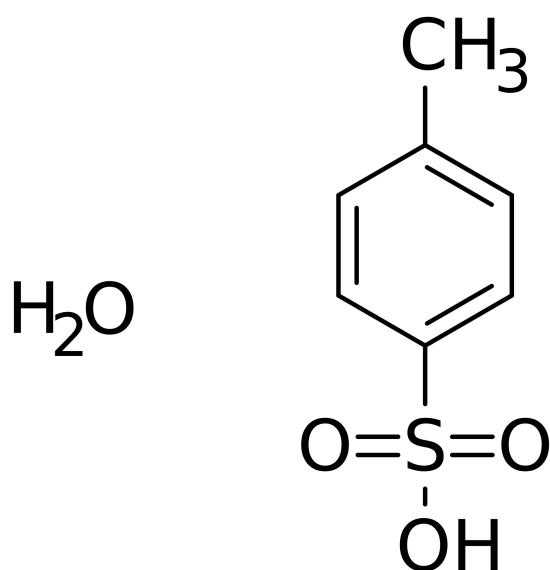




h1>P-toluenesulfonic acid 96% [6192-52-5]



CAS number: **6192-52-5**

Summary formula: **C₇H₈O₃S · H₂O**

Molar mass: **190.22 g / mol**

Synonyms: **para-Toluene sulfonic acid monohydrate, para-Toluenesulfonic acid monohydrate**

Translation [ENG]: **p-Toluenesulfonic acid monohydrate**

Application: **p-toluenesulfonic acid is used as an acid catalyst soluble in organic solvents, e.g. in esterification reactions and also for the elimination of the hydroxyl group.**

VARIATIONS

Image	Price	Pack size
<p>H_2O</p> <chem>Cc1ccc(S(=O)(=O)O)cc1.O</chem>	£170,96 gross £138,99 netto	10 kg

Image	Price	Pack size
	£854,81 gross £694,97 netto	50 kg

PRODUCT DESCRIPTION

P-toluenesulfonic acid 96% [6192-52-5]

P-toluenesulfonic acid is used as an acid catalyst soluble in organic solvents, e.g. in esterification reactions and also for the elimination of the hydroxyl group.

Physical description White, almost white or pale pink crystals

Sulfuric acid $\leq 0.3\%$

Total acid $\geq 97.0\%$ ($C_7H_8O_3S \cdot H_2O$)

Boiling point: 140 ° C (27 hPa)

Flash point: 180 ° C

Flash point: 600 ° C

Melting point: 56 ° C Elimination of water of crystallisation

PH value: 1 (650 g / l, H_2O , 20 ° C) (anhydrous substance)

Bulk density: 510 kg / m³

Solubility: 750 g / l

Hazard pictograms

Labeling of hazardous chemicals and mixtures that are part of the Globally Harmonized System of Classification and Labeling of Chemicals (GHS). The pictograms recommended by GHS have the shape of a square set on the top. They should contain a black symbol on a white background with a red border.

Priority rules to be observed in connection with the labeling of a substance:

- the skull and crossbones, the exclamation mark pictogram should not be added.
- corrosive effect, the exclamation mark pictogram should not be added if it concerns eye or skin

irritation.

- health hazard determining respiratory sensitization, the exclamation mark pictogram should not be added if it concerns skin sensitization or irritation to eyes or skin.

Source: [GHS pictograms](#)