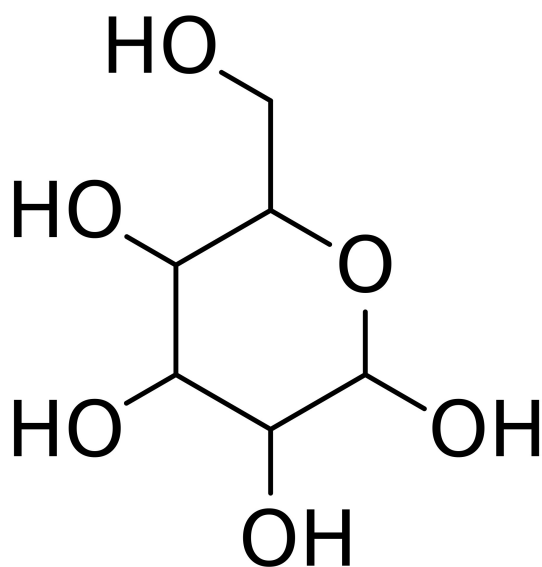




h1>Purified glucose anhydrous [50-99-7]



CAS number: **50-99-7**

Summary formula: **C₆H₁₂O₆**

Molar mass: **180.16 g / mol**

Synonyms: **dextrose, grape sugar**

Translation [ENG]: **glucose**

Application: **Glucose as a simple sugar has been used in both the pharmaceutical and food, chemical and chemical industries. High-calorie product, easily absorbed by the body. Glucose is an excellent strengthening nutrient during recovery periods, exhaustion and periods of increased physical effort.**

VARIATIONS

Image	Price	Pack size
	£144,40 gross £117,40 netto	25 kg



Image	Price	Pack size
	£304,00 gross £247,15 netto	50 kg

PRODUCT DESCRIPTION

Purified glucose anhydrous [50-99-7]

Glucose as a simple sugar has found application in both the pharmaceutical and food and chemical industries. High-calorie product, easily absorbed by the body. Glucose is an excellent strengthening nutrient during recovery periods, exhaustion and periods of increased physical effort.

Water insoluble substances max. 0.005%
Losses after drying (105 ± 5 ° C) max. 0.2%
Acids (j. CH_3COOH) max. 0.015%
Starch according to the recipe
Roasting residue (SO_4) max. 0.02%
Chlorides (Cl) max. 0.0025%
Sulphates and sulphites (SO_4) max. 0.005%
Heavy metals (Pb) max. 0.0005%
Arsenic (As) max. 0.00004%
Iron (Fe) max. 0.0005%
Lead (Pb) max. 0.0005%
Specific rotation (20 ° C, 10%, H_2O) $+52.5 \div +53$ °

Hazard pictograms

Labels for hazardous chemicals and mixtures that are part of the Globally Harmonized System of Classification and Labeling of Chemicals (GHS). The pictograms recommended by GHS have the shape of a square set on the top. They should contain a black symbol on a white background with a red border.

Priority rules to be observed in connection with the labeling of a substance:

- the skull and crossbones, the exclamation mark pictogram should not be added.
- corrosivity, the pictogram exclamation mark should not be added if it concerns eye or skin irritation.
- health hazard determining respiratory sensitization, the exclamation mark pictogram should not be added if it concerns skin sensitization or irritation to eyes or skin.

Source: [GHS pictograms](#)