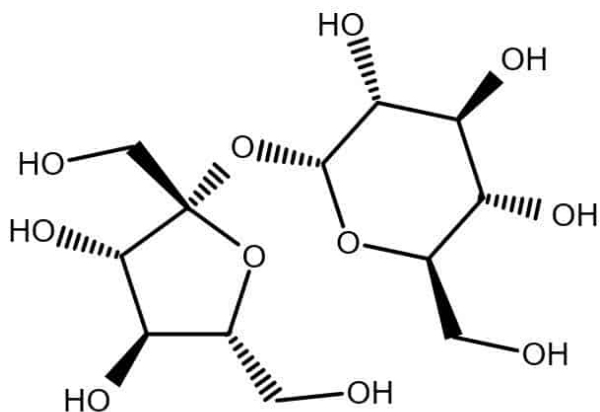


h1>Purified sucrose [57-50-1]

Absolute



CAS number: 57-50-1

Summary formula: C₁₂H₂₂O₁₁

Molar mass: 342.3 g / mol

Synonyms: cane sugar, beet sugar

Translation [ENG]: Sucrose

Application: Sucrose is used in desserts, drinks, cakes, ice cream, coatings, cereals and breads. It is also called beet sugar and cane sugar.

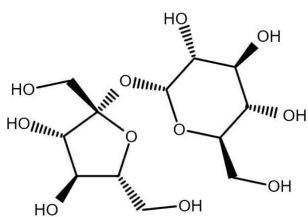
VARIATIONS

Image

Price

Pack size

Absolute



£72,16 gross | £58,67 netto

10 kg

Image	Price	Pack size
<p>Absolute</p> 	£180,31 gross £146,59 netto	25 kg

PRODUCT DESCRIPTION

Purified sucrose [57-50-1]

Sucrose is used in desserts, drinks, cakes, ice cream, coatings, cereals and breads. It is also called beet sugar and cane sugar. Starting material for the fermentative production of ethanol, butanol, glycerol, citric and levulinic acid. Used in pharmaceuticals as a flavoring agent, as a preservative, as an antioxidant (in the form of invert sugar), as an anti-inflammatory agent, as a glycerol substitute, as a granulating agent and tablet excipient, as a coating for tablets. In the plastics and cellulose industry, in rigid polyurethane foams, in the production of transparent mascaras and soaps.

Appearance colorless crystals or white powder

Content 99.5%

Specific rotation (20 ° C, 10%, H₂O) min. 66.25 °

Water insoluble substances max. 0.006%

Roasting residue max. 0.03%

Chlorides (Cl) max. 0.003%

Sulphates (SO₄) max. 0.005%

Heavy metals (Pb) max. 0.0005%

Bar (Ba) max. 0.005%

Calcium (Ca) max. 0.005%

Iron (Fe) max. 0.005%

Hazard pictograms

Labeling of hazardous chemicals and mixtures that are part of the Globally Harmonized System of Classification and Labeling of Chemicals (GHS). The pictograms recommended by GHS have the

shape of a square set on the top. They should contain a black symbol on a white background with a red border.

Priority rules to be observed in connection with the labeling of a substance:

- the skull and crossbones, the exclamation mark pictogram should not be added.
- corrosive effect, the exclamation mark pictogram should not be added if it concerns eye or skin irritation.
- health hazard determining respiratory sensitization, the exclamation mark pictogram should not be added if it concerns skin sensitization or irritation to eyes or skin.

Source: [GHS pictograms](#)